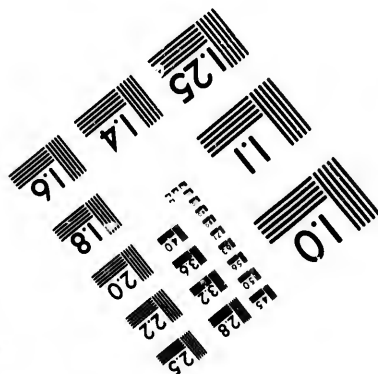
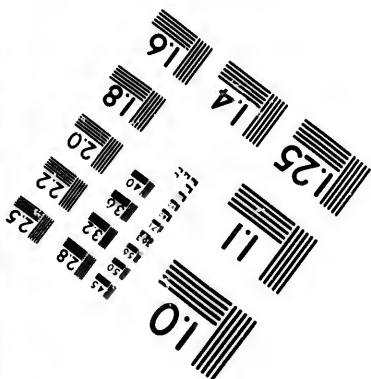
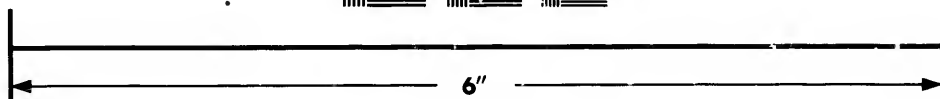
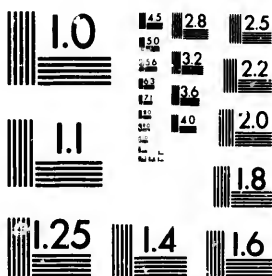


**IMAGE EVALUATION  
TEST TARGET (MT-3)**



**Photographic  
Sciences  
Corporation**

23 WEST MAIN STREET  
WEBSTER, N.Y. 14580  
(716) 872-4503

15 28 25  
32 22  
20  
8

**CIHM/ICMH  
Microfiche  
Series.**

**CIHM/ICMH  
Collection de  
microfiches.**



Canadian Institute for Historical Microreproductions / Institut canadien de microreproductions historiques

10  
01

**© 1982**

Technical and Bibliographic Notes/Notes techniques et bibliographiques

The Institute has attempted to obtain the best original copy available for filming. Features of this copy which may be bibliographically unique, which may alter any of the images in the reproduction, or which may significantly change the usual method of filming, are checked below.

L'Institut a microfilmé le meilleur exemplaire qu'il lui a été possible de se procurer. Les détails de cet exemplaire qui sont peut-être uniques du point de vue bibliographique, qui peuvent modifier une image reproduite, ou qui peuvent exiger une modification dans la méthode normale de filmage sont indiqués ci-dessous.

- Coloured covers/  
Couverture de couleur
- Covers damaged/  
Couverture endommagée
- Covers restored and/or laminated/  
Couverture restaurée et/ou pelliculée
- Cover title missing/  
Le titre de couverture manque
- Coloured maps/  
Cartes géographiques en couleur
- Coloured ink (i.e. other than blue or black)/  
Encre de couleur (i.e. autre que bleue ou noire)
- Coloured plates and/or illustrations/  
Planches et/ou illustrations en couleur
- Bound with other material/  
Relié avec d'autres documents
- Tight binding may cause shadows or distortion  
along interior margin/  
La reliure serrée peut causer de l'ombre ou de la  
distortion le long de la marge intérieure
- Blank leaves added during restoration may  
appear within the text. Whenever possible, these  
have been omitted from filming/  
Il se peut que certaines pages blanches ajoutées  
lors d'une restauration apparaissent dans le texte,  
mais, lorsque cela était possible, ces pages n'ont  
pas été filmées.
- Additional comments:/  
Commentaires supplémentaires:

- Coloured pages/  
Pages de couleur
- Pages damaged/  
Pages endommagées
- Pages restored and/or laminated/  
Pages restaurées et/ou pelliculées
- Pages discoloured, stained or foxed/  
Pages décolorées, tachetées ou piquées
- Pages detached/  
Pages détachées
- Showthrough/  
Transparence
- Quality of print varies/  
Qualité inégale de l'impression
- Includes supplementary material/  
Comprend du matériel supplémentaire
- Only edition available/  
Seule édition disponible
- Pages wholly or partially obscured by errata  
slips, tissues, etc., have been refilmed to  
ensure the best possible image/  
Les pages totalement ou partiellement  
obscurcies par un feuillet d'errata, une pelure,  
etc., ont été filmées à nouveau de façon à  
obtenir la meilleure image possible.

This item is filmed at the reduction ratio checked below/  
Ce document est filmé au taux de réduction indiqué ci-dessous.

10X	12X	14X	16X	18X	20X	22X	24X	26X	28X	30X	32X
					✓						

The copy filmed here has been reproduced thanks to the generosity of:

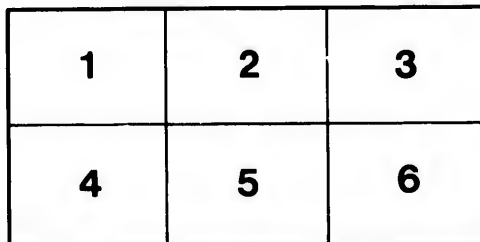
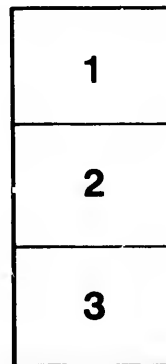
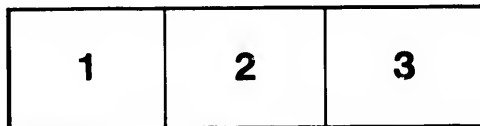
Library,  
Geological Survey of Canada

The images appearing here are the best quality possible considering the condition and legibility of the original copy and in keeping with the filming contract specifications.

Original copies in printed paper covers are filmed beginning with the front cover and ending on the last page with a printed or illustrated impression, or the back cover when appropriate. All other original copies are filmed beginning on the first page with a printed or illustrated impression, and ending on the last page with a printed or illustrated impression.

The last recorded frame on each microfiche shall contain the symbol  $\rightarrow$  (meaning "CONTINUED"), or the symbol  $\nabla$  (meaning "END"), whichever applies.

Maps, plates, charts, etc., may be filmed at different reduction ratios. Those too large to be entirely included in one exposure are filmed beginning in the upper left hand corner, left to right and top to bottom, as many frames as required. The following diagrams illustrate the method:



L'exemplaire filmé fut reproduit grâce à la générosité de:

Bibliothèque,  
Commission Géologique du Canada

Les images suivantes ont été reproduites avec le plus grand soin, compte tenu de la condition et de la netteté de l'exemplaire filmé, et en conformité avec les conditions du contrat de filmage.

Les exemplaires originaux dont la couverture en papier est imprimée sont filmés en commençant par le premier plat et en terminant soit par la dernière page qui comporte une empreinte d'impression ou d'illustration, soit par le second plat, selon le cas. Tous les autres exemplaires originaux sont filmés en commençant par la première page qui comporte une empreinte d'impression ou d'illustration et en terminant par la dernière page qui comporte une telle empreinte.

Un des symboles suivants apparaîtra sur la dernière image de chaque microfiche, selon le cas: le symbole  $\rightarrow$  signifie "A SUIVRE", le symbole  $\nabla$  signifie "FIN".

Les cartes, planches, tableaux, etc., peuvent être filmés à des taux de réduction différents. Lorsque le document est trop grand pour être reproduit en un seul cliché, il est filmé à partir de l'angle supérieur gauche, de gauche à droite, et de haut en bas, en prenant le nombre d'images nécessaire. Les diagrammes suivants illustrent la méthode.

ails  
du  
diffier  
une  
page

trata  
o

elure,  
à

I

I

I

l

s

d

v

o

t

N

w

l

sl

23

at

li

le

th

to

[FROM THE CANADIAN RECORD OF SCIENCE, Vol. II., No. 1, Jan., 1886.]

---

NEW FRESH-WATER SPONGES FROM NOVA SCOTIA  
AND NEWFOUNDLAND.

By A. H. MacKay.

In the article on Organic Siliceous Remains found in the Lake Deposits of Nova Scotia, published in the last number of the RECORD OF SCIENCE, Nos. 3 and 8 of the list of sponges were referred to as new. I here quote the original descriptions of the species, to which I append some observations. In the *Annals and Magazine of Natural History* of London, January, 1885, Mr. H. J. Carter, F.R.S., of England, describes a species from a lake in Pictou County, Nova Scotia, as follows:—

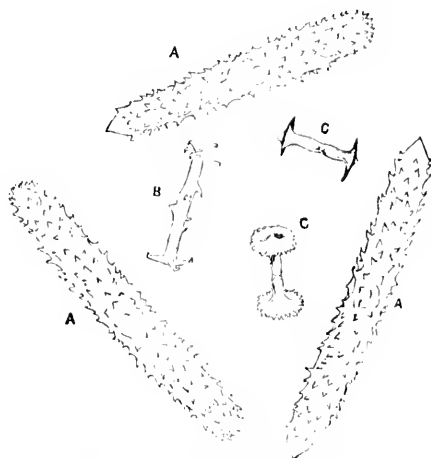
“*Spongilla mackayi*, n. sp.—Sessile, spreading, charged with little subglobular bodies like large statoblasts, about 1-12th inch. Skeletal spicules acerate, slightly curved and sharp-pointed, more or less thickly spined, averaging 50 by  $2\frac{1}{2}$ -6000ths inch in its greatest diameters; [accompanied abundantly by minute birotulate flesh-spicules precisely like that of *Meyenia everetti*—that is 3 to 4-6000ths inch long, with very thin smooth shaft about four times longer than the diameter of the rotule, which is 1-6000ths inch, toothed, with the teeth recurved.] Statoblasts globular,

consisting of a thick chitinous coat filled with the usual germinal matter, from which is very slightly prolonged an everted trumpet-shaped aperture; bearing slight traces externally of microcell-structure and the polygonal tissue; making one of twenty such which are arranged so as to form a subglobular body of the size mentioned; situated around a central cavity with their apertures *inward*; the whole supported by statoblast spicules of various sizes, which, intercrossing each other, form a net-like globular capsule, in which the outer parts of the statoblast are fixed and covered; apparently (for the specimen is dry) deficient at one point, which leads to the central cavity. Statoblast spicules acerate, sharp-pointed, like the skeletal spicules, but becoming much shorter and more coarsely spined as they approach the chitinous coats of the statoblasts, where they may be reduced to at least 27-6000ths inch in length, although often increased to 4-6000ths inch in thickness, and their spines, which are very irregular in size and situation, often as long as the spicule is broad."

The words in brackets are mine. Mr. Carter goes on, however, to notice the remarkable fact that this spongilla has flesh spicules identical with those of *M. everetti*; and suggests that possibly they may not belong to *S. mackayi*, but that their presence may be owing to the proximity of *M. everetti*, which grows in the same lake. My subsequent observations go to prove that Mr. Carter's surmise is correct, and that the flesh-spicules in the specimen are adventitious. When in St. John's, Newfoundland, this summer, I was conducted by the well-known historian and scientific observer, Rev. Moses Harvey, to Virginia Lake, a beautiful sheet of water, a few miles from the city, in which the development of *Spongilla mackayi* is very luxuriant on the stones, etc., in depths of from two to four feet of water. I have not observed these flesh-spicules in the specimens from Newfoundland or in other specimens from Nova Scotia.

The second new species was described by Mr. Edward Potts before the Philadelphia Academy of Natural Sciences, at its meeting of Feb. 24th, 1885, as follows:—

"*Heteromeyenia pictovens*, n. sp.—Sponge light green, even when dry, massive, encrusting; texture very compact, spicules non-fasciculated, persistent; surface mostly smooth.—Gemmules very scarce, spherical crust thick.—Skeleton spicules cylindrical, short, robust, rounded, or abruptly terminated; entirely spined, spines conical at the centre of the spicule, elsewhere generally curving *forward*, or towards each extremity. Rounded terminations of spicules covered with short spine, though frequently a single large spine or acute termination is seen at one or both extremities.—



HETEROMEYENIA PICTOVENSIS.

- A.—Skeleton spicule.  
 B.—Long statoblast spicule.  
 C.—Short statoblast spicule.

Dermal spicules absent or undiscovered.—Biotulates of the longer class surrounding the gemmules, rather numerous, one half longer than the others; shafts conspicuously fusiform or largest at the centre, where are frequently found one or more long spines; their rotules consist of three to six irregularly placed rays, recurved at the extremities.—Biotulates of the shorter class abundant and compactly placed around the gemmule; shafts mostly smooth, though sometimes bearing a single spine; irregularly cylindrical, but rapidly widening to support the rotules, which are



large, umbonate, nearly flat, and finely lacinate at their margins; occasionally bearing spines. — *Measurements.* Skeleton spicules 0.0075 inch long, by 0.00075 inch thick; length of long birotulates 0.0021 inch; of short birotulates 0.0012; diameter of disc of latter 0.0009 inch."

This is one of the most beautiful of our fresh-water sponges. It is so much more compact and firm than our other sponges, that it can nearly infallibly be recognized at sight or by touch when once seen and handled. Its range in Nova Scotia is quite extensive: it has been found on the Atlantic and Gulf slopes. It is also abundant in Newfoundland. *S. markaji* is also easily recognized without microscopic examination when once seen. Its encrusting habit, with the conspicuously large compound statoblasts, is very characteristic. Its nearest congener is the variety of *Spongilla fragilis* (Leidy) described by Dr. Geo. M. Dawson as *S. ottawaensis*.

te at their  
*measurements.*  
inch thick ;  
birotulates

fresh-water  
n than our  
recognized at

Its range  
ound on the  
Newfound-  
out micro-  
sting habit,  
sts, is very  
variety of  
M. Dawson

